



21.03.2025

Issue No: 1151

The Link

Charles Darwin School

Aspire - Endeavour - Achieve

Headlines

Visit to Downe Primary school

Last week, I visited Cudham, and this week, I visited Downe Primary School. We have a long tradition of receiving children from these village schools, and it was fantastic to continue building close working partnerships, meeting the children and staff, and supporting future transitions to CDS.

Ducks at Darwin

What an exciting week it's been watching our ducklings hatch! The students have loved every moment, and it's been a joy to see their curiosity and excitement grow. We'll be sharing updates and photos on our social media. If you want to learn more about the hatching process visit [Ducklings - Incredible Eggs](#) to find out more.

Year 9 Options Evening

A reminder that our Year 9 Options Evening will take place at school on Wednesday, 26 March.

Today, Year 9 students attended an Options and Careers Assembly, where they learned about the subjects available for Year 10 and the next steps in their educational journey. We strongly encourage families to attend this important event with their child next Wednesday. It's a great opportunity to gather information, ask questions, and receive guidance to help make informed decisions about subject choices for next year. We look forward to seeing you there.

Aston Smith, Headteacher

Uniform Policy Years 7-11

Parents/carers will be aware that **Oz Schoolwear** is our school outfitters.

They are open every week day and Saturday and will be open throughout the Easter holiday except Bank holidays.

Please contact them directly on: 01689 824767 or click on the link below to access their website

[Charles Darwin School | School Uniforms - Oz Schoolwear](#)

Address:

6 Chatsworth Parade, Queensway, Petts Wood, Kent, BR5 1DF

Closest train station: Petts Wood

Bus Routes: 208, N199, R3, R7, 273, 661

Remember, if you know sizes, Oz Schoolwear will take online and phone orders which can be delivered straight to the school for collection Thursday from lunchtime. This helps many families who don't live as local to Petts Wood where they are based. You or your son/ daughter can collect purchased items from main reception after delivery, normally late morning.

A reminder of our school uniform policy as we come to the end of the spring term and the weather changes:

- Blazers remain a compulsory item of school uniform Year 7-11 and should be in school every day
- V neck blue school jumpers remain an optional additional item and can be worn with the blazer
- Hoodies should not be worn in school and will be confiscated if they are seen
- Shoes should be worn in school, not trainers unless a medical note has been signed by the Achievement co-ordinator in the planner
- Jewellery should not be worn in school. This includes earrings. If seen, these items will be confiscated.

Students can and do ask teachers to remove blazers if classrooms are warm. When the weather is consistently hotter, the Headteacher will notify the school community when blazers can be left in lockers for the day.

We will continue to remind students of our uniform expectations via tutors, teachers and in assemblies. Please can families ensure any missing items of uniform are replaced asap and at the latest before the return in the summer term. Remember we have a very well stocked PreLoved uniform shop which has good quality barely used uniform based in school which all our families can use. Contact details are via the school website or Student Services. Blazer badges and ties can be collected from main reception, having been paid for via ParentPay.

Finally as we expect to see the weather change, please remind your son/daughter that water should be brought into school in a refillable bottle. Students can refill water bottles at fountains in their breaks and lunchtimes but will not be permitted to leave classrooms to do so unless in an emergency.

Many thanks for your continued support.

Mrs Rees



Charles Darwin School

Preloved Uniform Shop

Promoting a positive eco-friendly culture of reusing

Did you know we have a preloved uniform shop with a variety of nearly new school uniform and PE kits?

If you are interested in checking stock, please send an email with your requirements (size, gender, specific item) to

preloveduniform@cdarwin.com

you can also use the link below or scan the QR code.

<https://forms.office.com/r/EYNuVcZpsa>



Dance and Wellbeing in Biggin Hill

Dance and Wellbeing opportunities in Biggin Hill this Easter Holiday and Summer Term.

On Thursday 17th April at BHPS qualified teachers and wellbeing therapists will be running a **Girls day** to promote friendships and connections- this is a **free event 1-4pm. Years 5- 8.**

This day will include sports, dance, drama, music, yoga and coaching on how to deal with tricky friendships.

Please email: siobhan1980uk@yahoo.com to sign up for a free place.

Join Our
Inclusive Fun
Dance Class!
11-18 years



Wednesday 6-7pm
On The Beach - Dance studio Main
Road Biggin Hill

Qualified teacher and Health and
wellbeing coach. Enhanced DBS.

Email for booking:
abbottdance5@gmail.com

We are excited to announce that Abbott Movement will be launching a new dance class in Biggin Hill starting on April 23rd! This inclusive class is for young people aged 11-18 and will explore a variety of dance styles. There will also be time to develop your own creative ideas and choreography. No experience necessary.

The class will be led by Ella, a qualified secondary school teacher and Health and Wellbeing coach, with over 20 years of experience working in both mainstream and SEN settings. As a former Head of Performing Arts, Ella is passionate about using movement to help young people develop transferable skills, confidence, and resilience—skills they can take into everyday life.

We look forward to welcoming you to this exciting new Wednesday dance class, where you can make healthy connections with like-minded dancers!

If you have any questions or would like to sign up, please don't hesitate to email abbottdance5@gmail.com.

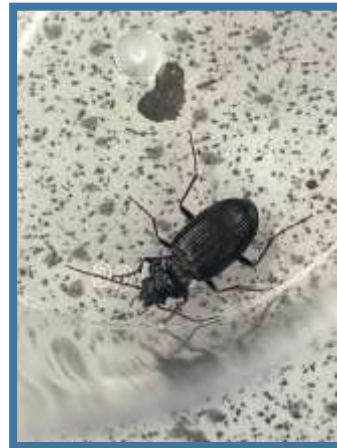
Classes are priced at £7 per session and are payable in half-term blocks.

We hope to see you there!

Thank you PTA

The science department would like to thank the PTA, through their funding support, we have been able to purchase high-quality quadrats and other ecological survey equipment. This ensures every student gets hands-on experience and can complete this essential part of their GCSE course effectively. A quadrat is a square frame (usually 0.25m²) used by students to study ecosystems. By placing the quadrat randomly in a habitat, students can estimate the distribution and abundance of plant species and small organisms in a specific area. This activity forms part of a required science practical for GCSE and A level students in the ecology sections of the biology curriculum.

Photos shows recent ecology work with GCSE students looking at plant distribution and investigating invertebrates within the local area.



Mrs MacKay

Year 8 students performed to Biggin Hill Primary



On Friday 14th March a group of year 8 students performed at Biggin Hill Primary School. In their Drama lessons, they have been learning about Theatre in Education as a style of performance and were tasked with creating a piece targeting year 5 students. Their piece had to have an educational message or a moral and include specific techniques to engage a younger audience e.g. audience interaction.

Their performances were confident, with expressive characters and really engaged the year 5's. Their messages ranged from how to stay safe online, the importance of friendship, anti-bullying and how to effectively transition from primary to secondary. The visit ended with a Q and A, with the year 5's keen to find out all about secondary school!

A really big well done to:

Chloe Priestley , Georgia Hall , Ronnie Kent , Callum Wade , Ciena-Lucia Scarciglia, Maxwell Hawker, Isla Brown, Shaniah Delanbanque,

Emily Lynch, Megan Gale, Asiyah Moustapha, Adam Piechowka, Sydney Daniels, Jamie Lett, Florence Adler, Liam Delaney, Alex Matei, David Harri and Sidney Still.

You were great ambassadors to the younger students.

Miss Currie

A reminder to parents that as well as the LINK and the 'latest news' section on the website, you can follow the latest events happening in our school community on:

CDarwinSchool



Satchel One



Thank you to all the parents who have logged in to Satchel One. Mrs Cohen is sending out logins to all the remaining parents who have not yet set up their account so all parents can see how their sons/daughters are getting on through achievement and behaviour points and check timetables and homework as needed. If you have not received yours and you have still not logged in, please e-mail directly on mcohen@cdarwin.com

Ms Kelly

Design Technology Appeal for Donations

Design Technology Appeal for Donations for a new Laser Cutter

Our Laser cutting machine has come to the end of its life and needs urgent replacement. We are now without this amazing resource that almost all GCSE and A-Level pupils use as part of their coursework. It has served us well for over 13 years and so now we need to raise funds for a replacement.

We aim to raise around £4,000 and so are asking all parents and staff for donations. This can be found on ParentPay where we ask for a donation of £3. Any help is massively appreciated by all pupils and staff in DT. Thank you for your support.

Mr Baker

A poster for a Quiz Night event. At the top, it says 'Charles Darwin PTA are delighted to host our popular Quiz Night'. The text 'Quiz Night' is in a large, stylized font with question marks. Below this, the date 'Friday 25th April 2025' is in a pink box, and the location 'Main Hall, Charles Darwin School' and times 'Doors open: 7.00pm' and 'Trivia: 7.30pm - 10:00pm' are in a white box. The price is '£10 PER PERSON, TEAMS OF UP TO 8'. There is a QR code with 'SCAN ME' below it. At the bottom, it says 'Scan the QR code with your camera to request tickets or visit our online shop: https://friends-of-charles-darwin-school.sumupstore.com' and 'Quiz teams, please bring your own drinks and snacks!'. The email 'friends@cdarwin.com' is at the very bottom.

Charles Darwin PTA
are delighted to host our popular
Quiz Night

**Friday 25th
April 2025** Main Hall, Charles Darwin School
Doors open: 7.00pm
Trivia: 7.30pm - 10:00pm

£10 PER PERSON, TEAMS OF UP TO 8

Scan the QR code with your camera to request tickets or
visit our online shop: <https://friends-of-charles-darwin-school.sumupstore.com>

Quiz teams, please bring your own drinks and snacks!

friends@cdarwin.com

Attendance

Congratulations to the following Tutor Groups who have the highest attendance for week ending 14 March 2025.

MINUTES LATE TO SCHOOL	IMPACT ON YOUR ATTENDANCE IN 1 YEAR
5 MINUTES Per day =	3.4 DAYS MISSED 98.4% ATTENDANCE
10 MINUTES Per day =	6.9 DAYS MISSED 97.6% ATTENDANCE
15 MINUTES Per day =	10.3 DAYS MISSED 94.6% ATTENDANCE
20 MINUTES Per day =	13.8 DAYS MISSED 92.9% ATTENDANCE
30 MINUTES Per day =	20.7 DAYS MISSED 89.2% ATTENDANCE

7LBy	97%
8CMo	95.8%
9PDg/MBa	95.8%
10JAI	95.6%
11JLa/LWr	96.8%
12FSu/KEr	96.7%
13JDa	95.9%

As you are aware attendance is linked to a student's attainment and at Charles Darwin we work closely with the parents to keep students' attendance levels as high as possible. Please could we ask that if your child feels unwell in the morning (headache etc.) and they do feel better later on, that you send them in. This will benefit them as they will not miss a whole days learning.

Please can we also remind parents to call in before 8.30am for each day of your child's absence and clearly stating your child's name and form. Please do not rely on receiving a text from us chasing their absence.

A reminder that pupils **should not** contact home if they feel unwell but should be seen and assessed by Mrs Booth, our Health Care Lead.

Parents should be aware that pupils will not be sent home without being seen by Mrs Booth in the first instance.

Thank you for your continued support.

Pupil absence line: 01959 574043

Reminder – please can parents call the absence line each day of your child's absence **before 8.30am**, clearly stating your child's name and form. Please do not rely on receiving a text from us chasing their absence.

If you wish to report your child's absence, **OUT OF SCHOOL HOURS**, please call the school on **01959 574043** and when prompted to enter the extension number, please **dial 1** and you will be taken through to the student absence line where you can leave a message regarding your child's absence. This ensures we know your child is safe and their absence is authorised where possible.

Thank you for your support.



Parents should be advised that the school does not provide students with Paracetamol unless it is a medical emergency. We have a limited supply in school and prefer that medication wherever possible is administered at home.

Hay Fever Season - Medication for Students

Hay Fever and the symptoms for children studying at school can be very uncomfortable, please ensure that if your child suffers with Hay Fever that they take any relevant medication/antihistamine before school. The school is unable to provide this medication to students.

Thank you

**Mrs Booth
Lead First Aid**



Charles Darwin School

Headteacher: Aston Smith, BA (Hons), MA, NPQH

Jail Lane
Biggin Hill
Westerham
Kent TN16 3AU
Tel: 01959 574043
enquiries@cdarwin.com

School Caretaker
Monday – Friday (6.30 am – 2.30pm)
£27,729– £28,125

We wish to appoint a full-time Caretaker to join our committed and hardworking Site Team from June 2025. We are looking for an enthusiastic individual who can display a conscientious and logical approach to a variety of tasks necessary to contribute to the smooth running of the school. Good practical skills and a flexible approach to work are essential for this post.

We are a “good” school (Ofsted 2023) with an ethos that encourages academic rigour, high expectations and a well-disciplined approach to learning.

Application Forms and further details are available on our website www.cdarwin.com – key information – vacancies.

Closing date: Friday 28th March 2025

Please note: all applicants must complete the Charles Darwin School application form which is available on our website: www.cdarwin.com (information/job vacancies). CVs alone will not be considered.

The school is committed to safeguarding and promoting the welfare and safety of children and young people and expects all staff to share this commitment. Any offer of employment will be subject to an Enhanced Disclosure with the Disclosure and Barring Service and full background checks.

This post is exempt from the Rehabilitation of Offenders Act (ROA) 1974. It is an offence to apply for this role if the applicant is barred from engaging in regulated activity relevant to children.

Learning Support Assistant
36 hours a week, 38 weeks a year
8am to 4pm Monday to Friday
Actual salary £23,631

We wish to appoint a Learning Support Assistant to join a well-established team supporting a range of students' needs in class, in small groups and/or specialised individual learning. Applicants should ideally have experience of working with students with a range of Special Educational Needs and experience of working with students with ASD and ADHD would be an advantage. Applicants should have good English and Maths skills (GCSE equivalent grade C or above) and be confident working with IT.

We are a “good” school (Ofsted 2023) with an ethos that encourages academic rigour, high expectations and a well-disciplined approach to learning.

Application Forms and further details are available on our website www.cdarwin.com – key information – vacancies.

Closing date: 28th March 2025 (interviews to be held the following week)

Please note: all applicants must complete the Charles Darwin School application form which is available on our website: www.cdarwin.com (information/job vacancies). CVs alone will not be considered.

The school is committed to safeguarding and promoting the welfare and safety of children and young people and expects all staff to share this commitment. Any offer of employment will be subject to an Enhanced Disclosure with the Disclosure and Barring Service and full background checks.

This post is exempt from the Rehabilitation of Offenders Act (ROA) 1974. It is an offence to apply for this role if the applicant is barred from engaging in regulated activity relevant to children.

Year 8 Duty Pupils

Ria White
Soraia Colvin
Alex Buxton-Wilmott
Licia Hales
Elijah Gordon

Lily-May Smith
George Henn
Sophie Dilling
Finley Abbott
Jessica-Jane Bruckner

Student Services Duty Pupils

Alfie Mason
Jack Pini
Jack Rice
Stevie Ruggins
Summer Morse



They have been fantastic this week, and their help has been invaluable.

Dates for the Diary

March

25th March - Year 12 UCAS Fair - EXCde
26th March - Year 9 Options Evening
28th March - Trip: A Level Booster Revision - Business

April

3rd April - Year 12 & 13 Parents' Evening
4th - 12th April - Trip: Austria, Ski Trip:
4th April - End of Spring term
7th - 21st April - Easter Holiday
21st April - Easter Monday (school closed)
22nd April - Summer term starts
24th April - Trip: Farraday Challenge - STEM, Darrick Wood School
29th April - Year 7 Parents' Evening

May

1st May - Trip: Year 10 Geography Trip to Rottingdean
2nd- 3rd May - Trip: Y9 Bronze DofE Qualifying Expedition, Wadhurst/Bewl Water



As the weather is getting warmer please can all students bring in a reusable water bottle to school each day. The water bottles can be refilled at the canteen and near to Students Services at break time and lunchtime. We only have a limited supply of plastic cups for First Aid and use of students who forgot a water bottle.

Student Services Team

Term Dates 2024-2025

Spring 2025

Monday 6th January – Friday 14th February
Half term: Monday 17th February – Friday 21st February
Monday 24th February – Friday 4th April
Easter Holiday: Monday 7th April - Monday 21st April

Summer 2025

Tuesday 22nd April – Friday 23rd May
[Monday 5th May Bank Holiday]
Half term: Monday 26th May – Friday 30th May
Monday 2nd June – Tuesday 22nd July

INSET ays:

Friday 23rd May 2025
All staff Trust Training Day – Friday 27th June 2025

Notes:

Good Friday 18th April
Easter Monday 21st April

The SEN team at Charles Darwin:

Mrs L Thom, SENCo
Mr B Frost, Assistant SENCo
Mrs J Patten, Senior Learning Support Assistant
Miss R Higgins, SEN Administrator

Should you need to make contact with us, please use the inbox below:
send@cdarwin.com

Term Dates 2025-2026

Autumn 2025

Monday 1st September – Friday 17th October

Half term: Monday 20th October – Friday 31st October

Monday 3rd November – Friday 19th December

Christmas Holiday: Monday 22nd December - Friday 2nd January

Spring 2026

Monday 5th January – Friday 13th February

Half term: Monday 16th February – Friday 20th February

Monday 23rd February – Friday 27th March

Easter Holiday: Monday 30th March - Friday 10th April

Notes:

Good Friday 3rd April 2026

Easter Monday 6th April 2026

Summer 2026

Monday 13th April – Friday 22nd May

[Monday 4th May Bank Holiday]

Half term: Monday 25th May – Friday 29th May

Monday 1st June – Friday 17th July

INSET Days:

Monday 1st September 2025

Tuesday 2nd September 2025

Monday 3rd November 2025

Wednesday 14th January 2026

Monday 23rd February 2026

Friday 22nd May 2026

Friday 26th June 2026

GREEN GARDEN WASTE SITE:

Biggin Hill: Charles Darwin School, Jail Lane
Sundays 8am - 12noon, open 2 March to 26 October 2025.

Details

All green garden waste must be bagged and residents must bring their council tax bill, drivers licence or a form of identification that includes their address.

Please do not put your garden waste in builders' sacks, as these are too heavy to be lifted safely. No commercial garden waste will be accepted.

Yes please	No thanks
Grass cuttings	Tree trunks and large branches
Prunings (no bigger than 2 inches round)	Soil and rubble
Dead plants	Garden furniture, flower pots and plastic debris



HOLIDAY ACTIVITIES & FOOD PROGRAMME

**FOR YOUNG PEOPLE
AGES: 8 - 18 YEARS OLD
& RECEIVING BENEFIT RELATED
FREE SCHOOL MEALS**

- East Hub @ The Link Youth Centre, Midfield Way, St Pauls Cray BR5 2QL
- North Hub @ Castlecombe Youth Club, Castlecombe Rd Mottingham SE9 4AT
- South Hub @ Spitfire Youth Club, Church Rd, Biggin Hill TN16 3LB
- West Hub @ Streetwise Youth Club, @ Melvin Halls, Melvin Rd, Penge, SE20 8EU

Each day will include a meal & fun activities!

- Baking
- Arts & Crafts Workshops
- Discovery Projects
- Team Sports & Games
- T-shirt making
- IT skills & fun

To see the dates, times & book a place please scan the QR code or use the link below: <https://www.Bromley.gov.uk/xfp/form/228>



YouthSupportProgramme@bromley.gov.uk



[@BromleyYouthActivities](https://www.facebook.com/BromleyYouthActivities)



[@BromleyYouthActivities](https://twitter.com/BromleyYouthActivities)



Department
for Education

**BROMLEY
YOUTH** SUPPORT
PROGRAMME

